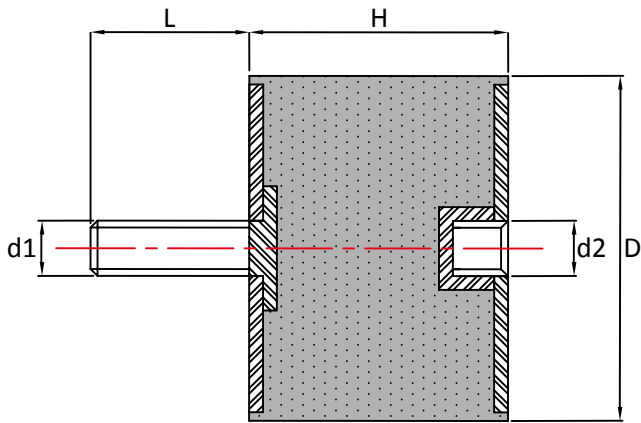


Male Female Rubber Vibration Mounts



D x H	d1 x L	d2	45° Shore A	60° Shore A	70° Shore A	mm
10 x 08	M4 x 10	M4	2.4	4.4	6.2	0.6
10 x 10	M4 x 06	M4	2.1	4.0	5.5	0.8
15 x 13	M4 x 10	M4	4.0	7.8	10.8	1.1
15 x 15	M4 x 10	M4	6.0	11.0	15.4	1.3
20 x 15	M6 x 18	M6	9.3	17.5	24.0	1.2
20 x 20	M6 x 18	M6	7.2	13.4	18.5	1.6
20 x 25	M6 x 18	M6	6	12	17.5	2.1
20 x 30	M6 x 18	M6	5.5	9.9	13.9	2.6
25 x 15	M6 x 18	M6	18.5	35.0	49.0	1.2
25 x 20	M8 x 20	M8	16.5	30.0	40.0	1.6
25x 25	M6 x 18	M6	12.8	24.0	33.0	2.1
25 x 30	M8 x 20	M8	11.8	23.0	30.0	2.7
30 x 15	M8 x 20	M8	23.0	42.0	59.0	1.1
30 x 20	M8 x 20	M8	21.0	39.0	53.0	1.6
30 x 25	M8 x 20	M8	17.5	30.0	41.0	2.1
30 x 30	M8 x 20	M8	15.5	29.0	39.0	2.6
30 x 40	M8 x 20	M8	14.5	28.0	37.0	3.6
40 x 20	M8 x 23	M8	42.0	79.0	109.0	1.6
40 x 20	M10 x 25	M10	42.0	79.0	109.0	1.6
40 x 25	M8 x 20	M8	39.0	73.0	100.0	2.1
40 x 30	M8 x 23	M8	34.0	64.0	89.0	2.6
40 x 30	M10 x 25	M10	34.0	64.0	89.0	2.6
40 x 35	M8 x 23	M8	31.0	57.0	80.0	3.1
40 x 35	M10 x 25	M10	31.0	57.0	80.0	3.1
40 x 40	M8 x 20	M8	30.0	55.0	76.0	3.6
40 x 40	M10 x 25	M10	30.0	55.0	76.0	3.6
50 x 20	M10 x 28	M10	87.0	164.0	226.0	1.5
50 x 25	M10 x 25	M10	81.0	151.0	209.0	2.0
50 x 30	M10 x 25	M10	70.0	129.0	178.0	2.5
50 x 35	M10 x 25	M10	61.0	113.0	156.0	3.0
50 x 40	M10 x 25	M10	50.0	94.0	130.0	3.5

D x H	d1 x L	d2	45° Shore A	60° Shore A	70° Shore A	mm
50 x 45	M10 x 28	M10	45.0	84.0	117.0	4.0
50 x 50	M10 x 25	M10	41.0	78.0	107.0	4.5
60 x 25	M10 x 25	M10	126.0	234.0	323.0	2.0
60 x 30	M10 x 25	M10	111.0	206.0	284.0	2.5
60 x 36	M10 x 25	M10	109.0	203.0	280.0	3.1
60 x 36	M12 x 37	M12	109.0	203.0	280.0	3.1
60 x 40	M10 x 25	M10	101.0	188.0	256.0	3.5
60 x 40	M12 x 37	M12	101.0	188.0	256.0	3.5
60 x 45	M10 x 25	M10	92.0	171.0	237.0	4.0
65 x 35	M10 x 25	M10	133.0	247.0	342.0	3.0
65 x 40	M12 x 37	M12	118.0	216.0	298.0	3.5
65 x 45	M12 x 37	M12	103.0	190.0	264.0	4.0
65 x 50	M12 x 37	M12	88.0	163.0	226.0	4.5
70 x 30	M12 x 37	M12	175.0	326.0	445.0	2.4
70 x 40	M10 x 25	M10	143.0	266.0	367.0	3.4
70 x 40	M12 x 37	M12	143.0	266.0	367.0	3.4
70 x 45	M10 x 25	M10	129.0	239.0	321.0	3.9
70 x 45	M12 x 37	M12	129.0	239.0	321.0	3.9
70 x 50	M12 x 37	M12	117.0	217.0	300.0	4.4
70 x 60	M12 x 37	M12	116.0	214.0	296.0	5.4
75 x 25	M12 x 37	M12	221.0	420.0	577.0	1.9
75 x 40	M12 x 37	M12	154.0	288.0	397.0	3.4
75 x 50	M12 x 37	M12	147.0	276.0	381.0	4.4
75 x 55	M12 x 37	M12	128.0	242.0	333.0	4.9
100 x 50	M16 x 44	M16	300.0	540.0	750.0	4.2
100 x 55	M16 x 44	M16	275.0	515.0	710.0	4.7
100 x 60	M16 x 44	M16	265.0	480.0	670.0	5.2
100 x 75	M16 x 44	M16	220.0	390.0	540.0	6.7
100 x 100	M16 x 44	M16	170.0	300.0	420.0	9.2
125 x 55	M16 x 44	M16	400.0	800.0	1150.0	4.7
150 x 55	M16 x 41	M16	505.0	920.0	1296.0	4.7
150 x 75	M16 x 44	M16	400.0	720.0	1000.0	6.7

Max compression load in Kg deflection in mm.

This information is for guidance only. Customers are recommended to contact us for further technical information on products and applications.

We reserve the right to alter specifications or withdraw products without notice.